

Leadership Development in partnership with



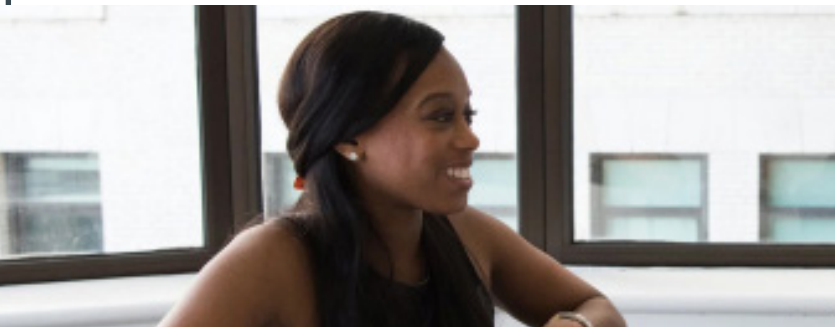
Accelerate

### About this programme






A 3 month programme combining the online RLDP™ with one-to-one coaching.

For those who want one-to-one support with your own personally matched coach.

This programme enhances clarity of direction and accelerates leadership growth in areas that are most important to you.



### What you gain

-  Absolute **clarity on your strengths** and development areas and **break** ingrained habits
-  **Heightened self awareness**, creates focus and targets your priority areas for development
-  Define and **achieve your goals**
-  **Be supported and challenged** throughout
-  Measure progress and **articulate your transformation**

### Course content



### Your commitment

- Participation in four 90-minute online sessions over three months with an experienced Venture Coaching Associate
- Completion of work between sessions using the online Resilient Leaders Development Programme (RLDP™)

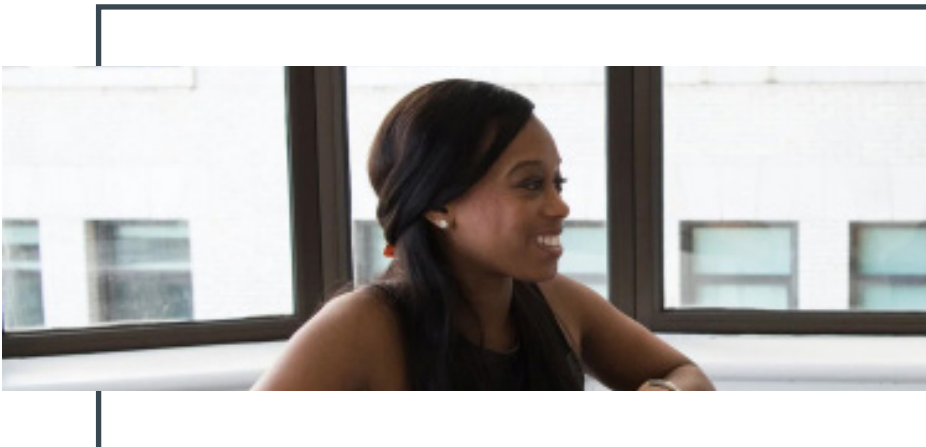
## Course structure

	Assessment	Discovery	Challenge	Completion
	Week 1	Week 3	Week 8	Week 13
Session content	<p>Discussion of motives for coaching</p> <p>Coaching contract</p> <p>Overview of RLE™ sent to leader with instructions on how to access and use the RLDP™</p>	<p>Debrief RLA® results</p> <p>Clarify goal</p> <p>Agree action plan</p>	<p>Isolate blockers to behaviour change and strengthen motivation to overcome them</p> <p>Introduce relevant tools to supplement RLDP™</p> <p>Agree action plan</p>	<p>Review progress including celebration of successes and identification of continuing challenges</p> <p>Agree action plan</p>
Individual learning	Complete RLA® Self and Feedback assessments	Engage with RLDP™	Engage with RLDP™ Reassess RLA®	Continue RLDP™

RLE™ - Resilient Leaders Elements

RLDP™ - Resilient Leader Development Programme

RLA™ - Resilient Leaders Assessment



The  
Consultation  
Institute

If you are interested in finding out more about this, or any other Leadership Programme, please get in touch with our Account Management team.

[info@consultationinstitute.org](mailto:info@consultationinstitute.org)  
[www.consultationinstitute.org](http://www.consultationinstitute.org)